

Ivanov Annotates

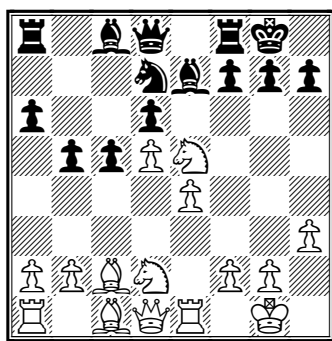
GM Alexander Ivanov

White: Ivanov (2622)

Black: Friedel (2536)

Foxwoods (6), 22.03.2008 [C96]

1.e4 e5 2.Nf3 Nc6 3.Bb5 a6 4.Ba4 Nf6
5.0-0 Be7 6.Re1 b5 7.Bb3 d6 8.c3 0-0
9.h3 Na5 10.Bc2 c5 11.d4 Nd7 12.Nbd2
exd4 13.cxd4 Nc6 14.d5 Nce5
15.Nxe5?!



This was the first time I played the so-called Graf variation, named after the German GM, who introduced the idea exd4, followed by Nc6, and I messed up the move order. 15.a4 Rb8 leads to the main line: 16.Nxe5 Nxe5 17.axb5 axb5 18.f4 Ng6 19.Nf3 f5!? with unclear play. The last round game Friedel-Becerra, Foxwoods 2008 saw 15...Nxf3+ 16.Nxf3 Rb8 17.axb5 axb5 18.Bf4±.
15...Nxe5 16.a4 Bd7

This move is possible since the Nd7 moved to e5, and Black has an easier game compared to lines with Rb8.

17.f4 Ng6 18.Nf3 Bh4 19.Nxh4 Qxh4 20.f5

20.Rf1 Bxh3= 21.gxh3 Qg3+ 22.Kh1 Qxh3+ with perpetual check.

20...Ne5 21.Rf1 Rfe8 22.Kh2!?

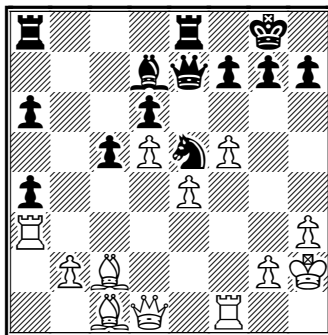
This move prepares the following rook maneuver.

22...bxa4

Perhaps, 22...b4 is a safer option, which prevents the Ra1 from getting to g3.

23.Ra3 Qe7?!

A defeatist spirit must lead to disaster.
Eugene Znosko-Borovsky



According to the following computer analysis Black is still OK, but the correct defense must include the moves Qf6, h6 and Kf8 – all difficult for a human player, because they leave the black pieces on the kingside exposed to tactical threats. 23...Qf6 24.Rg3 h6 25.Qh5 Bb5 (25...Kh7? 26.Bg5+-; 25...Kf8!?) 26.Bxh6 Bxf1 27.Bxg7 Qxg7 28.Rxg7+ Kxg7 29.f6+ Kxf6 30.Qf5+ Ke7 31.Qxf1∞; 23...Bb5! 24.Rf4 Qf6 25.Rg3 h6 26.Qh5 Kf8! (26...Rab8? 27.Rh4 Kf8 28.Rxg7 Kxg7 29.Bxh6+ Kg8 30.Bg5+-) Δ27.Rg6 (27.Rh4? Be2!±) 27...fxg6 28.fxg6 Qxf4+ 29.Bxf4 Kg8.

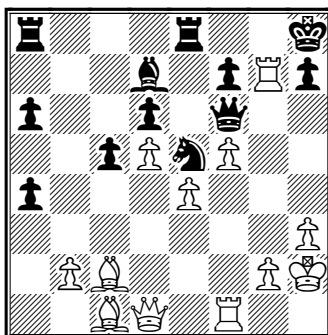
24.Rg3 Kh8?

Only this move is a clear mistake. A lesser evil was 24...f6 25.Bh6 g6 26.fxg6 hxg6 27.Bxa4!±.

25.Rxg7!

Black must have underestimated this move. White has a large advantage.

25...Qf6□



The only move to stay in the game. The capture loses: 25...Kxg7? 26.f6+ Qxf6 27.Rxf6 Kxf6 28.Qh5 (28.Qf1+!? Kg7 29.Qf4+- Fritz. I didn't see this, or rather didn't realize that Black can't hold the dark squares here.) 28...Ke7 29.Bg5+

f6 30.Qxh7+ Nf7 (30...Kd8 31.Bxf6+ ΔKc7 32.Bxa4) 31.e5 (31.Bf4 Rf8 32.Bd1±) 31...fxg5 32.Bg6 Rf8 (32...Kd8 33.e6+-) 33.c6 Bxc6 (33...Be8 34.Qg7±) 34.dxe6 Kxe6 35.Bxf7+ Rxf7 36.Qe4+- This last line I calculated.
26.Rg3?!

Happy with snatching the pawn I retreat. More convincing is 26.Rg5!? Rg8 (26...Bb5 27.Rf2 Nc4 28.Qh5 Rg8 29.Rf3±) 27.Rh5 Qg7 28.g4± f6 29.g5.

26...Rg8 27.Rc3 Bb5 28.Rf2 Rg7 29.Qh5

29.Bxa4?! Qh4 30.Rf4 Bxa4 31.Qxa4 Rag8!.

29...Rag8

29...Nc4.

30.Qh6

30.Bh6 Nc4 31.Bxg7+ Rxg7 32.Qf3 Nxb2∞.



Alexander Ivanov

30...Qd8 31.f6

Preventing Black from playing f6. 31.Bf4! Re8 32.Bg3 f6 33.Ra3±.

31...Rg6 32.Qh4 Qf8 33.g3

With less than five minutes on the clock all I see is the direct threat Rf5-h5. Black's next move stops this. 33.Bf4! Qb8 (33...h6 34.Qh5+-) 34.Bxe5 (34.Bh6±) 34...dxe5 35.Bd1±.

33...Bd7 34.Bd1 h6 35.Bf4

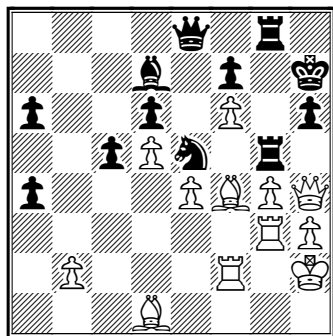
35.Bh5 Rg5 I noticed this resource 36.g4! A strong but difficult move to find in time trouble since it cuts off the Bh5.

© 2008 A. P. Cortizas, Jr.

35...Kh7 36.g4?!

Here again White had a chance to break Black's pawn structure in the center and convert his advantage with fewer problems. 36.Bxe5!? dxe5 37.Bh5 Rg5 38.Rfc2 Qd6 39.g4 Qxf6 40.Rf2 Qb6 (40...Qd6 41.Rxf7+ R8g7 42.Rcf3+-) 41.Bxf7 Rb8 42.Rcf3+-.

36...Qe8 37.Rg3 Rg5



Sacrificing the exchange to stop g5. 37...Bb5 38.Bc2 Qd8 39.g5±.

38.Bxg5 Rxg5 39.Rc3 Qb8 40.Qg3 Rg8

The time trouble has ended. Black's strong Ne5 makes it hard for White to convert the exchange.

41.Rg2

White will win if he opens files for his rooks.

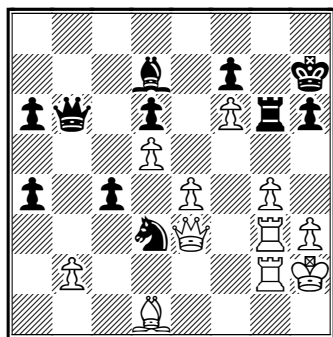
41...Rg6 42.Qf4 Qd8 43.Rf2 Qb6 44.Rg3 c4

Black prevents g5 (Rf2 is under attack) and prepares Nd3.

45.Rfg2

The alternative is 45.Be2, but trading queens seemed a safer option.

45...Nd3 46.Qe3



46.Qd2!? Rxf6 47.g5.

46...Qxe3 47.Rxe3 Rxf6 48.Bc2 Ne5

48...Rf1 49.e5 dxe5 50.Rxd3!+- (50.Rxe5±).

49.Ra3 Bb5 50.Bxa4 Rf1 51.Bxb5 axb5

52.Ra6

52.Re2!?

52...b4

Perhaps, Black's best chance here was 52...Nf3+!? 53.Kg3 Ng5 54.Kh4! (54.Re2? Rg1+!) 54...Nxe4 55.Rb6±.

53.Rxd6 b3 54.Rb6 Kg7

54...Re1 55.d6 Rxe4 56.Rb7 Rd4 57.Re7+-.

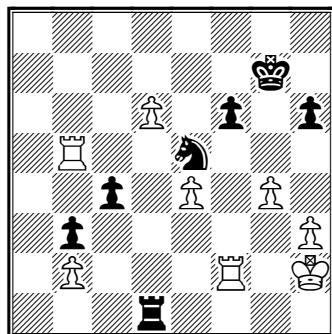
55.d6 Rc1 56.Rf2

56.g5!?

56...Rd1

56...Nd3 57.d7+-.

57.Rb5 f6?



More tenacious was 57...Nd3 58.Rd5 Nxf2 59.Rxd1 Nxd1 60.d7 c3 61.d8Q c2 62.Qd2. I calculated up to here and saw that Black can't grab b2 because of a double stroke. 62...Kh7!? (62...Kg8 63.g5 h5 64.Kg3+-; 62...Nxb2? 63.Qc3+-) 63.Qf4 Kg8 64.g5 hxg5 65.Qxg5+ Kh7 66.h4!? Nf2 67.h5 Nxe4 68.Qf4+-.

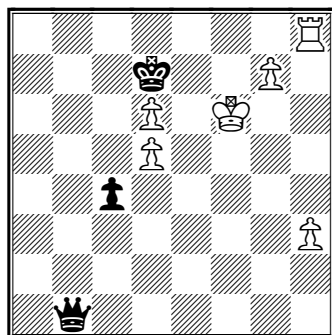
58.Rd5+- Rxd5 59.exd5 Kf7 60.Kg3 Ke8 61.Rxf6 Nd3 62.Rxh6 Nxb2

62...c3 63.bxc3 b2 64.d7+-+ (64.Rh8+-+).

63.g5 Nd3

63...c3 64.g6 c2 65.g7 Kf7 66.g8Q+ Kxg8 67.d7+-.

64.g6 Ne5 65.Rh8+ Kd7 66.g7 Ne4+ 67.Kf4 Nf6 68.Kf5 b2 69.Kxf6 b1Q



70.Rd8+ 1-0

Black resigned, as it is checkmate in four: 70...Kd8 71.g8Q+ Kd7 72.Qe6+ Kd8 73.Qe7+ Kc8 74.Qc7#.

Edward C. Lafferty, R.I.P.

Former longtime MACA member Ed Lafferty died of lung cancer on Thursday, June 5, 2008. He was 51. Ed was one of the most active players in New England – having competed in nearly 400 USCF-rated tournaments since his very first one in 1995 at the Waltham Chess Club.

Besides being a member of the Waltham club, Ed was also a regular participant at many tournaments at the Boylston CC in Somerville and the Metrowest Chess Club in Natick. His last MACA tournament was the Pillsbury Memorial in 2007.

He was born on June 23, 1956, the son of Edward L. and Margot A. (Footer) Lafferty, and had lived many years in Newton before moving to Waltham. Besides his parents, he leaves two brothers, Michael J. and Jeffrey P. Lafferty, one nephew and three nieces.

Reginald A. Boone, R.I.P.

Reginald A. "Reggie" Boone of Gardner, 82, died Saturday, June 28, 2008. He was born on January 15, 1926 in Gardner, the son of Thomas and Jane (Kliskey) Boone of Penzance, England, and had lived most of his life in Gardner.

He graduated from Gardner High School in 1944 and was later inducted into the school's Football Hall of Fame. After graduating, he was inducted into the Army and fought in the European theater, spending two years overseas. He returned home a decorated veteran, feted with the Bronze Star for bravery behind enemy lines.

Upon returning to the U.S., he decided to pursue a career in gymnastics. With a 1942 Massachusetts state gymnastic championship award for prowess on the horizontal bar and flying rings, Reggie and his three-man troupe headed for California. He moved back East in 1948 and married in 1952.

Reggie was a longtime member of the Wachusett Chess Club in Fitchburg. His love affair with chess spanned more than half a century and he will be sorely missed by the many chess players who knew him.